

CAPTURE DESKTOP



PRODUCT OVERVIEW

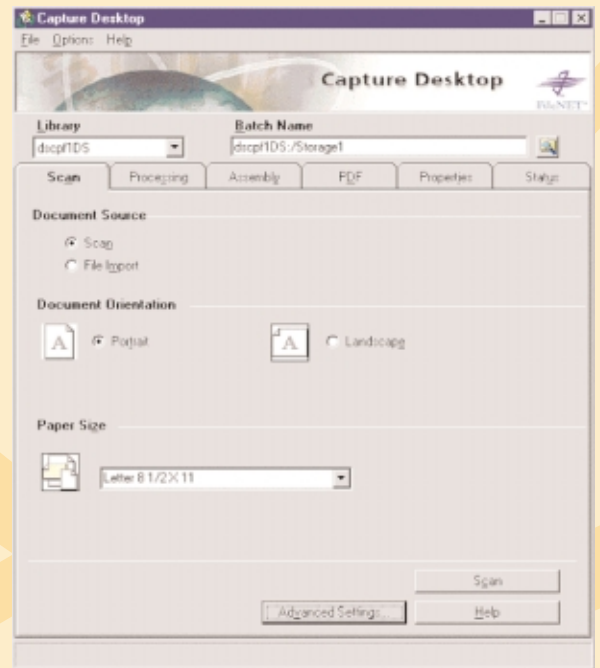
Panagon™ Capture Desktop for Content Services acquires and processes digital and paper-based documents into the Content Services repository, providing an easy-to-use front end for eContent management. Suitable for departmental, ad hoc, and low- to medium-volume scanning environments, it captures, indexes, and stores virtually any document type, so that your departments and workgroups can efficiently capture information needed in their daily operations. Panagon Capture Desktop is an entry-level offering within FileNET's Panagon series of document capture solutions.

Panagon Capture Desktop is designed to meet the following objectives:

- **ADDRESS THE DOCUMENT CAPTURE NEEDS** of low-to-medium volume environments of all types – particularly eBusiness web deployment teams, small accounting, legal, and finance departments, and engineering groups.
- **PROVIDE YOUR SMALL DEPARTMENT AND WORKGROUP USERS WITH AN AFFORDABLE, EASY-TO-DEPLOY SOLUTION** that addresses their capture and full text retrieval needs with minimal training, support, and maintenance.
- **AUTOMATE MANUAL DATA CAPTURE TASKS, STREAMLINE DOCUMENT ENTRY PROCESSING, REDUCE LONG-TERM OPERATIONAL COSTS, AND IMPROVE PRODUCTIVITY** with barcode, patch code, forms ID, and image enhancement components.
- **DELIVER BOTH OUT-OF-BOX FUNCTIONALITY** as well as the option to customize your capture application

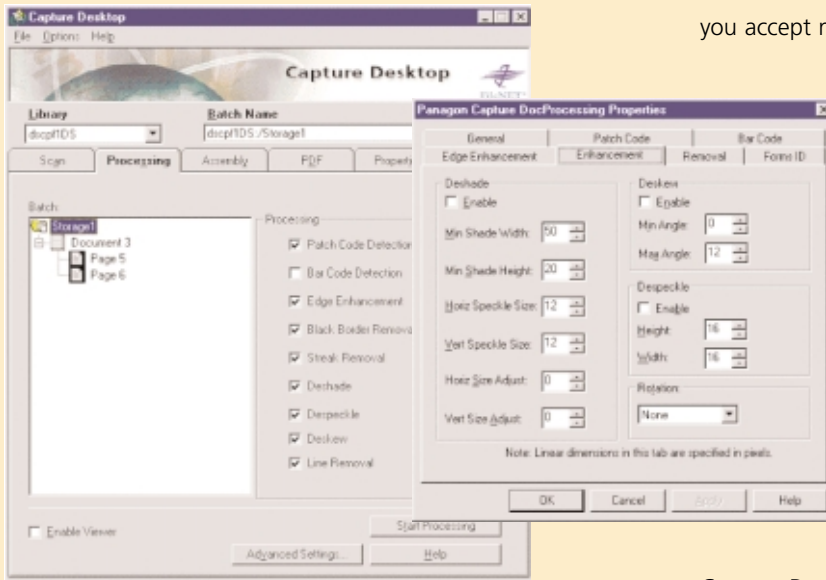
through combining the modular architecture with capture-specific, third party software components.

- **AUTOMATE INDEXING AND IMPROVE THE INDEXING ACCURACY** of incoming data with index, index verify, image verify, and assembly and commit components.
- **INTEGRATE WITH YOUR EXISTING BUSINESS AUTOMATION ENVIRONMENT** by complying with Microsoft® standards, as well as industry-standard software development tools and interfaces.
- **DELIVER A SIMPLE, USER-FRIENDLY INTERFACE** to reduce your training and support requirements.



Capture Desktop provides a simple-to-use interface, where all of the scanning and importing functions are easy to access and navigate.





Complete DocProcessing capabilities within Capture Desktop include bar and patch code detection, and image enhancements features, all having default setting capabilities.

A SINGLE-STATION SOLUTION

Your smaller workgroups and departments depend on having fast access to information, but neither you nor they have the resources to connect, train, or support them on a full-scale, enterprise-capture system. They are better served by a single, local station solution that provides the functionality of your corporate capture system, but that is designed to handle their more limited volume of documents without a lot of support, maintenance, or training.

Panagon Capture Desktop addresses these needs by letting you connect a scanner to a single workstation so that all your smaller scale document capture needs including scanning, document processing, image enhancement and repair, indexing and committal, can be met by one local workstation. And, when you are ready, you can submit these captured documents directly to your main information repository.

CAPTURE CAPABILITIES FOR MULTIPLE DOCUMENT TYPES

Panagon Capture Desktop can accept image and non-image data, including HTML pages or forms from the Web, as well as Electronic Document Interchange (EDI) documents. Better still, it is an ideal platform for capturing non-electronic information such as industry reports, SEC filings, diagrams, charts, legal documents, and vendor materials lists, to name a few. Designed to let

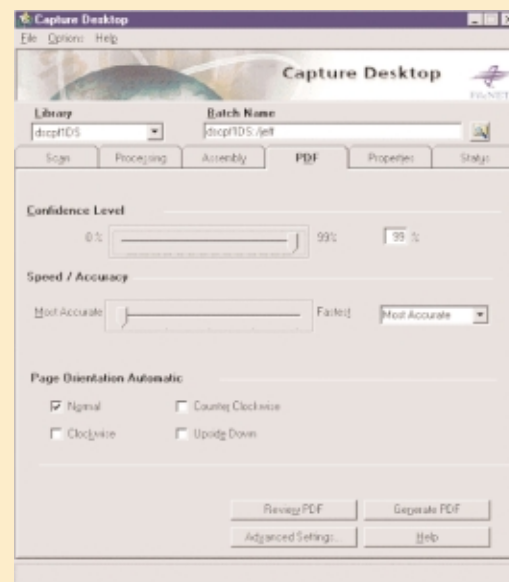
you accept more information from more sources, Panagon Capture Desktop efficiently and accurately processes your documents as required. You save valuable time while ensuring the integrity of all your incoming data.

OPTIONAL PDF FILE CONVERSION

Adobe® Acrobat™ PDF files are an increasingly common industry standard, enabling you to post universally viewable, graphics-rich documents to the Web and other content libraries. With its optional, low-cost Acrobat plug-in, Panagon

Capture Desktop can capture a document as a TIFF image, and then return it with a PDF header and footer. Your image can now be viewed on a PDF reader like Adobe Acrobat and modified as if it were a PDF file to begin with. In addition to full text retrieval, you gain additional editing and viewing capabilities, making source materials more valuable throughout your organization.

Panagon Capture Desktop can also apply Optical Character Recognition (OCR) to an image file so that every character recognized can be overlaid onto the scanned TIFF image. The end result is a PDF file with full text retrieval capabilities, plus the original TIFF file. The value and usability of your captured documents is enhanced as they now work seamlessly with industry-standard tools like Adobe Acrobat.



With the Adobe Acrobat option, PDF files can be generated directly from the scanned image, or TIFF images can be converted post scan. Complete OCR recognition is also provided through this option.

INTEGRATED DOCUMENT CAPTURE FOR THE ENTERPRISE

FLEXIBLE, MODULAR ARCHITECTURE

Panagon Capture Desktop provides a complete set of document capture process components that can be fully integrated with your FileNET system environment.

Unlike monolithic capture applications, each of Panagon Capture Desktop's components operates independently for excellent performance and flexibility.

And, Panagon Capture Desktop includes a series of rapid application development (RAD) tools to expedite and simplify customization tasks using industry-standard programming environments such as C++, Visual Basic, PowerBuilder, and others. This significantly curtails software development time and reduces the cost of ownership since your customized RAD objects can be recycled in other projects.

The software framework for Panagon Capture Desktop is based on Microsoft OLE Automation. This technology makes it easy to plug in third party OLE components, such as OCR/ICR, that interact seamlessly with your capture application. And your local image repository interface is based on Microsoft's component object model (COM), which ensures the interoperability of all repository software objects.

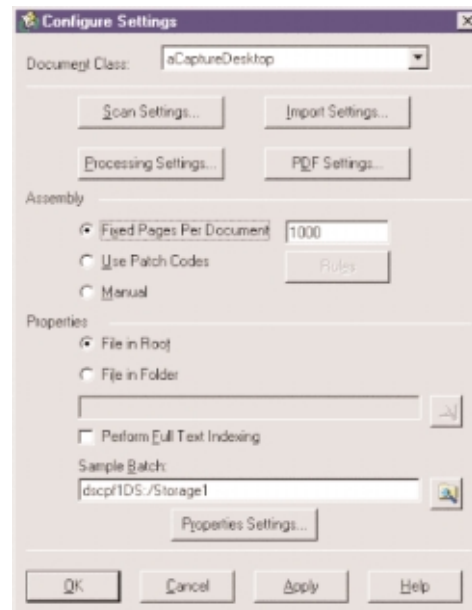
REDUCING COST OF OWNERSHIP

Eliminating bottlenecks and maximizing resources can streamline the capture process and significantly decrease long-term operational expenses. Panagon Capture Desktop can further reduce document capture costs with image enhancement, automated indexing via barcodes and patch codes, and tight integration with your enterprise-wide content management system and repository.

Additionally, each workgroup and department using Panagon Capture Desktop can customize the document capture process to their specific needs, eliminating wasted effort and the cost of purchasing unnecessary applications.

SIMPLICITY OF USE

Panagon Capture Desktop does not require highly skilled, specialized system administrators to set up and run your scanning stations. Instead, it is user-installable and requires almost no training. It consists of a basic user interface which steps your users through the set up process with a series of basic options to choose between, and several pre-set defaults. It produces an audible beep for patchcodes and barcodes, which alerts the user to the progress of the batch as they prepare the next batch. It also provides users with the unique ability to easily



Capture Desktop simplifies system administration by providing configurable default settings for all functions.

customize their desktop view space to best fit their needs through the use of floating windows.

FileNET has been building industry leading content and process management solutions since the early 1980s, with a specialized focus on Web deployments since 1997. Panagon Capture Desktop offers a capture solution ideally suited to your smaller departments and workgroups who need an easy-to-use, low-maintenance single-station system to better handle their native electronic and paper-based documents for input into the Content Services repository.

PRODUCT COMPONENTS	SOFTWARE REQUIREMENTS	HARDWARE REQUIREMENTS
Panagon Capture Desktop	<ul style="list-style-type: none"> Windows NT 4.0 SP 6a, or Windows 2000 Professional IDM Desktop 3.1 with the latest patch Content Services 5.1 or 5.2 Pixel Translations ISIS Toolkit v5.1 (installed by Capture Setup) or <ul style="list-style-type: none"> Kofax Hardware Runtime for Adrenaline 850 and 1700 board v3.3 or <ul style="list-style-type: none"> Kofax Hardware Runtime for KF-92xx v3.2a 	<ul style="list-style-type: none"> CPU for Scan Station: Intel based Pentium CPU 500 MHz minimum required 866 MHz recommended System Memory for Scan Station Minimum 256 MB RAM Recommended 512 MB RAM Additional memory recommended for color JPEG images

PRODUCT FEATURE LIST

- Integrated with Content Services
- Leverages IDM Desktop
- Single Station Application
- Simplified User Interface
- Document Processing
- File Import
- Open Scanner Architecture
- Kodak 3590C Bichromodal Support
- Extensive List of Supported Scanners

SINGLE STATION ARCHITECTURE

- Capture electronic and non-electronic documents, on a single local workstation, including images, faxes, text, HTML forms, etc.
- Intuitive user interface includes simplified configuration options and several pre-set defaults, eliminating the need for specialized system administrators
- All scanning, document processing, image enhancement and repair, index, and committal are handled at the local station
- Information can be easily transferred from local repository to main enterprise repository

DOCUMENT CAPTURE, ARCHIVING AND MANAGEMENT

- Image enhancement and repair capability improves accuracy of manual processing and OCR
- Conversion to multi-page TIFF, option to convert TIFF images to PDF format

- Merge multiple JPEG images or a combination of JPEG and TIFF images into a single file
- Includes bar code, and patch code components
- Organize documents in user-definable, dynamic or static folders within a local repository
- Enables full-text retrieval, indexing, content and index-based searches
- Integration with virtually any Microsoft Windows application

SYSTEM DESIGN AND PERFORMANCE

- Supports processing low to medium volumes
- Supports industry standard scanners at or above scanner vendor rated speeds
- Supports scanner resolution up to 2400 dpi
- Sets security on documents before they are committed to Content Services
- Rapid development of custom solutions through the optional Toolkit, which provides the Visual Basic code

EASE OF USE

- Produces an audible beep for patchcodes and barcodes alerting the user to the progress of the batch
- Automated wizard driven mode of operation allows users to begin working immediately
- Floating windows allow the user to customize their desktop view space to best fit their needs

